

- PCWA Facilities and Features**
- Dam
  - Ancillary and Other Facilities
  - Powerhouse
  - Gage
  - Penstock
  - Tunnel
  - FERC Boundary
- Other Facilities**
- PG & E Transmission Lines:
- 230 kV
  - 60 kV
- Transportation**
- Non-Project General Access Road
  - Project Road
  - Project Trail
  - Recreation Access Road
  - Recreation Water Supply Facility Access Road or Trail
  - Other Road
  - Western States Trail (as shown on USDA-FS maps)
  - Tevis Cup Trail (as shown on USDA-FS maps)
- Project Recreation Facilities**
- Picnic Area
  - Boat Ramp
  - Scenic Viewpoint
  - Developed Campground
- Visual Quality**
- Key Observation Point

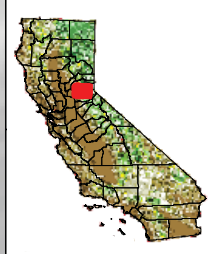
**PCWA**  
 Placer County Water Agency  
 Middle Fork American River Project

**Map REC 5-1**  
**Key Observation Points**  
 Hell Hole Area

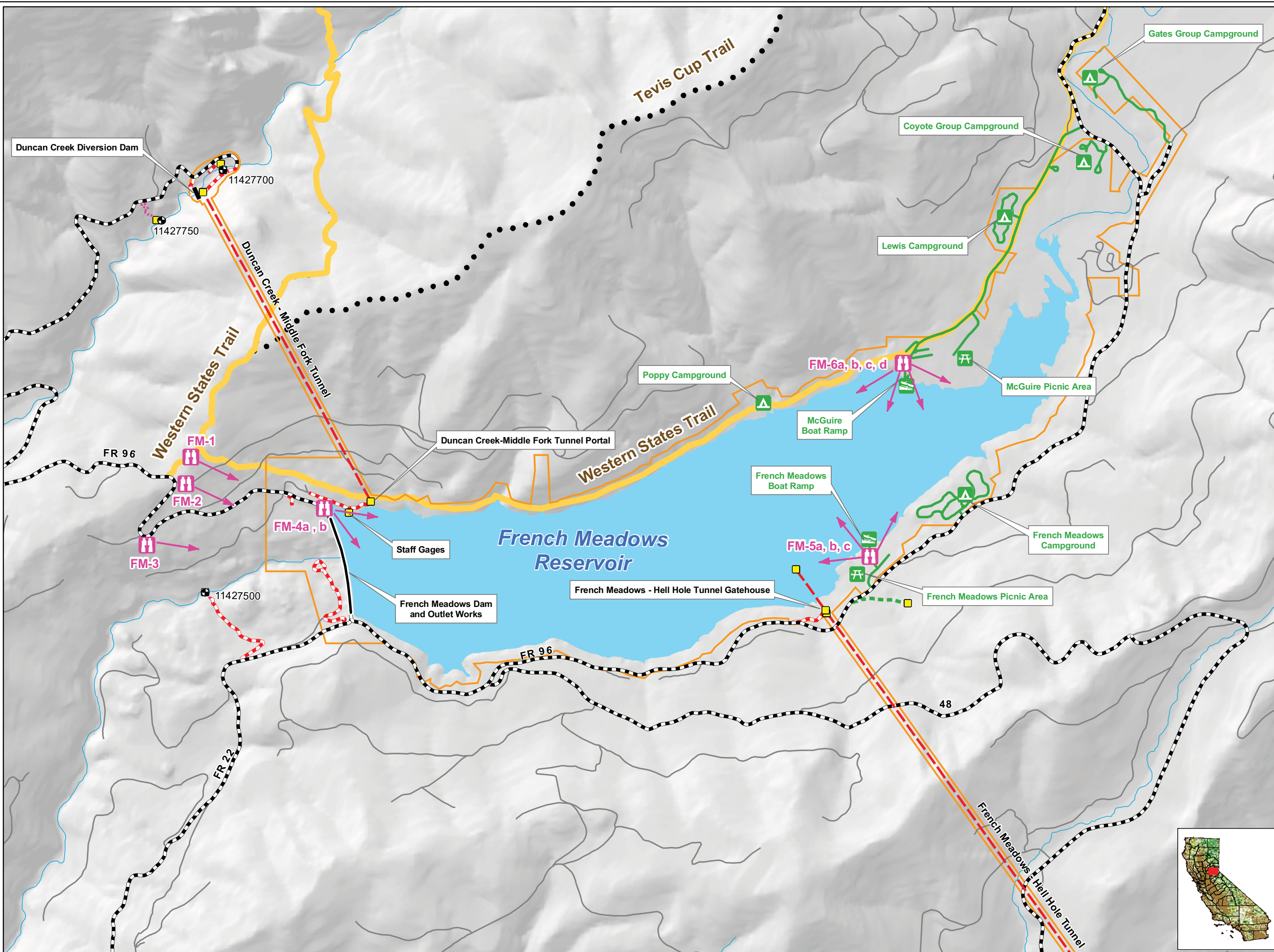
0 500 1,000 2,000 Feet

Projection: Ca. Stateplane, Zone 2  
 Datum: NAD 83

Date: 8/5/09







- PCWA Facilities and Features**
- Dam
  - Ancillary and Other Facilities
  - Powerhouse
  - Gage
  - Penstock
  - Tunnel
  - FERC Boundary
- Other Facilities**
- PG & E Transmission Lines:
- 230 kV
  - 60 kV
- Transportation**
- Non-Project General Access Road
  - Project Road
  - Project Trail
  - Recreation Access Road
  - Recreation Water Supply Facility Access Road or Trail
  - Other Road
  - Western States Trail (as shown on USDA-FS maps)
  - Tevis Cup Trail (as shown on USDA-FS maps)
- Project Recreation Facilities**
- Picnic Area
  - Boat Ramp
  - Scenic Viewpoint
  - Developed Campground
- Visual Quality**
- Key Observation Point

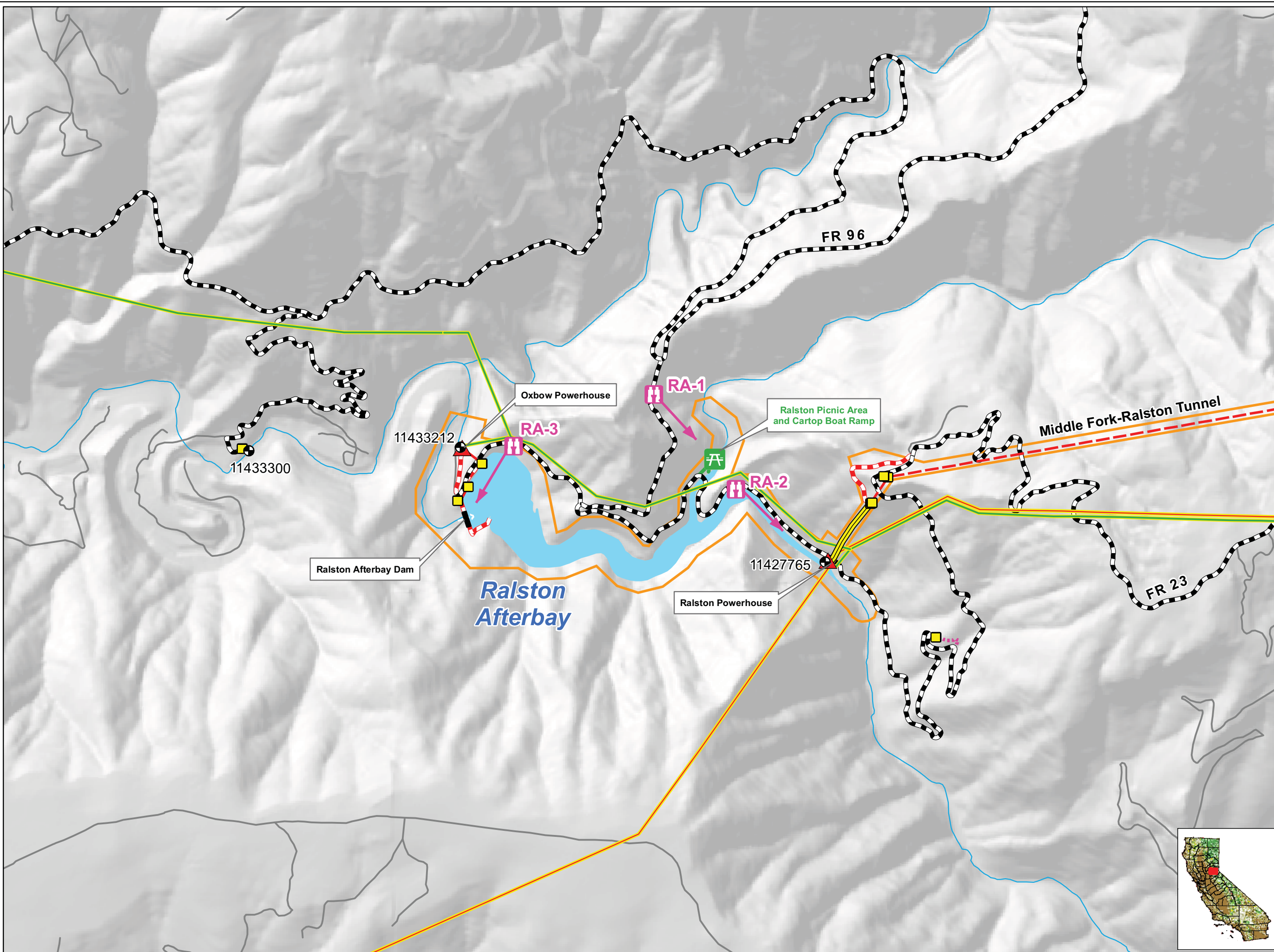
Placer County Water Agency  
Middle Fork American River Project

**Map REC 5-2**  
**Key Observation Points**  
**French Meadows Area**


Date: 8/5/09

Projection: Ca. Stateplane, Zone 2  
Datum: NAD 83



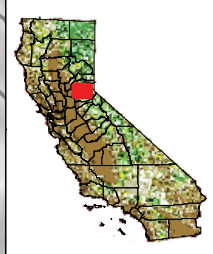
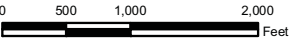


- PCWA Facilities and Features**
- Dam
  - Ancillary and Other Facilities
  - Powerhouse
  - Gage
  - Penstock
  - Tunnel
  - FERC Boundary
- Other Facilities**
- PG & E Transmission Lines:
- 230 kV
  - 60 kV
- Transportation**
- Non-Project General Access Road
  - Project Road
  - Project Trail
  - Recreation Access Road
  - Recreation Water Supply Facility Access Road or Trail
  - Other Road
  - Western States Trail (as shown on USDA-FS maps)
  - Tevis Cup Trail (as shown on USDA-FS maps)
- Project Recreation Facilities**
- Picnic Area
  - Boat Ramp
  - Scenic Viewpoint
  - Developed Campground
- Visual Quality**
- Key Observation Point



Placer County Water Agency  
Middle Fork American River Project

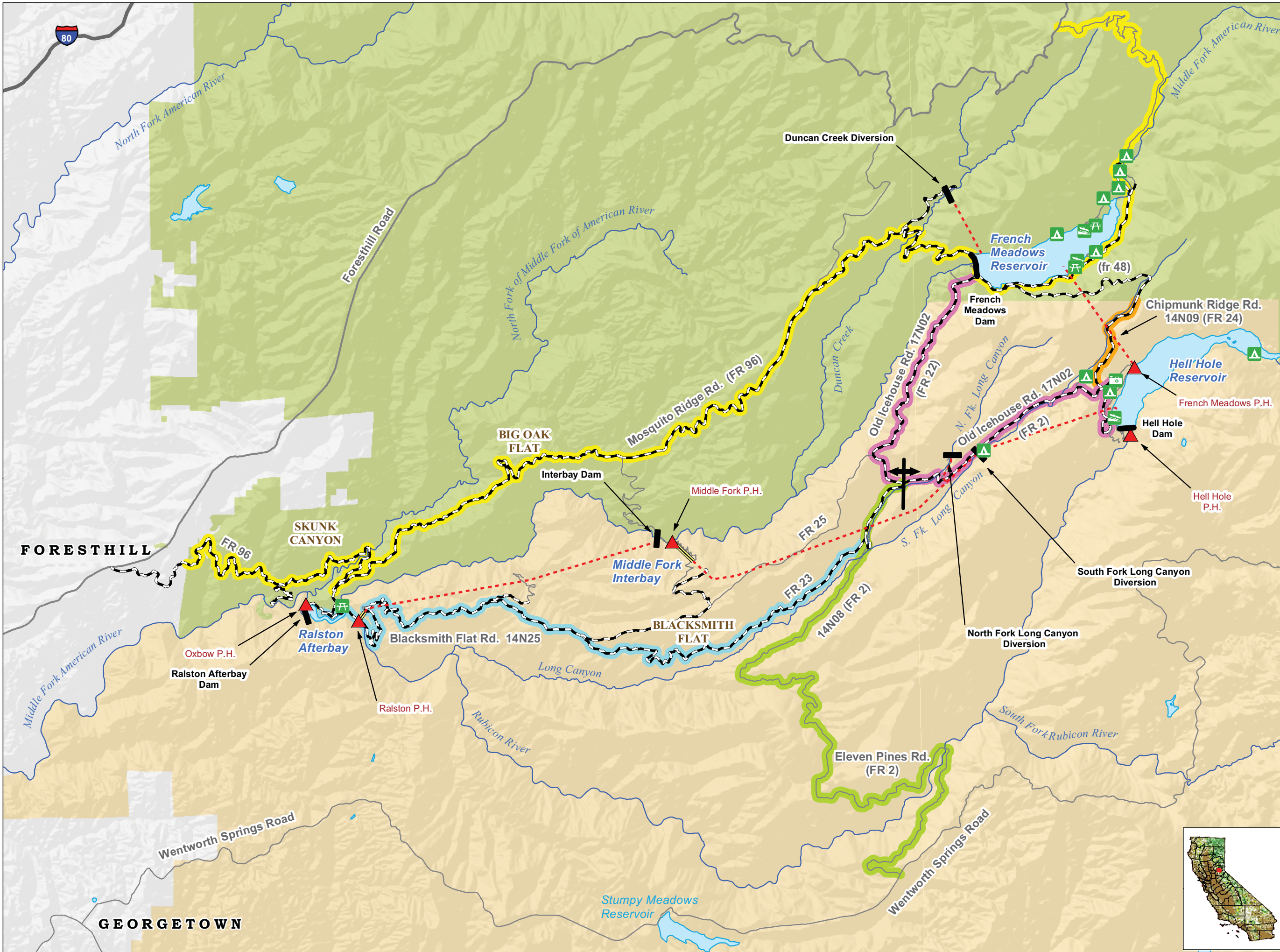
**Map REC 5-3**  
**Key Observation Points**  
**Ralston Afterbay Area**

Projection: Ca. Stateplane, Zone 2  
Datum: NAD 83

Date: 8/5/09





**Project Facilities**

- Powerhouse
- Dam
- Tunnel
- Penstock

**Project Recreation Facilities**

- Boat Ramp
- Developed Campground
- Picnic Area
- Scenic Viewpoint

**Transportation**

- Non-Project General Access Road
- Other Roads

**Hydrography**

- Watercourse
- Water Body

**USDA-FS: Administrative Boundary**

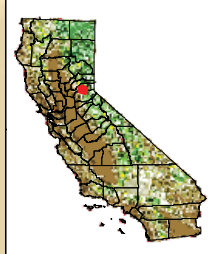
- Tahoe National Forest
- Eldorado National Forest



Placer County Water Agency  
Middle Fork American River Project

Map REC 5-4

**Roads in the Vicinity of the MFP  
Designated as USDA-FS Managed Viewsheds**



Projection: CA State Plane, Zone 2  
 Datum: NAD 83  
 Date: 8/5/09



### Visual Quality Objectives

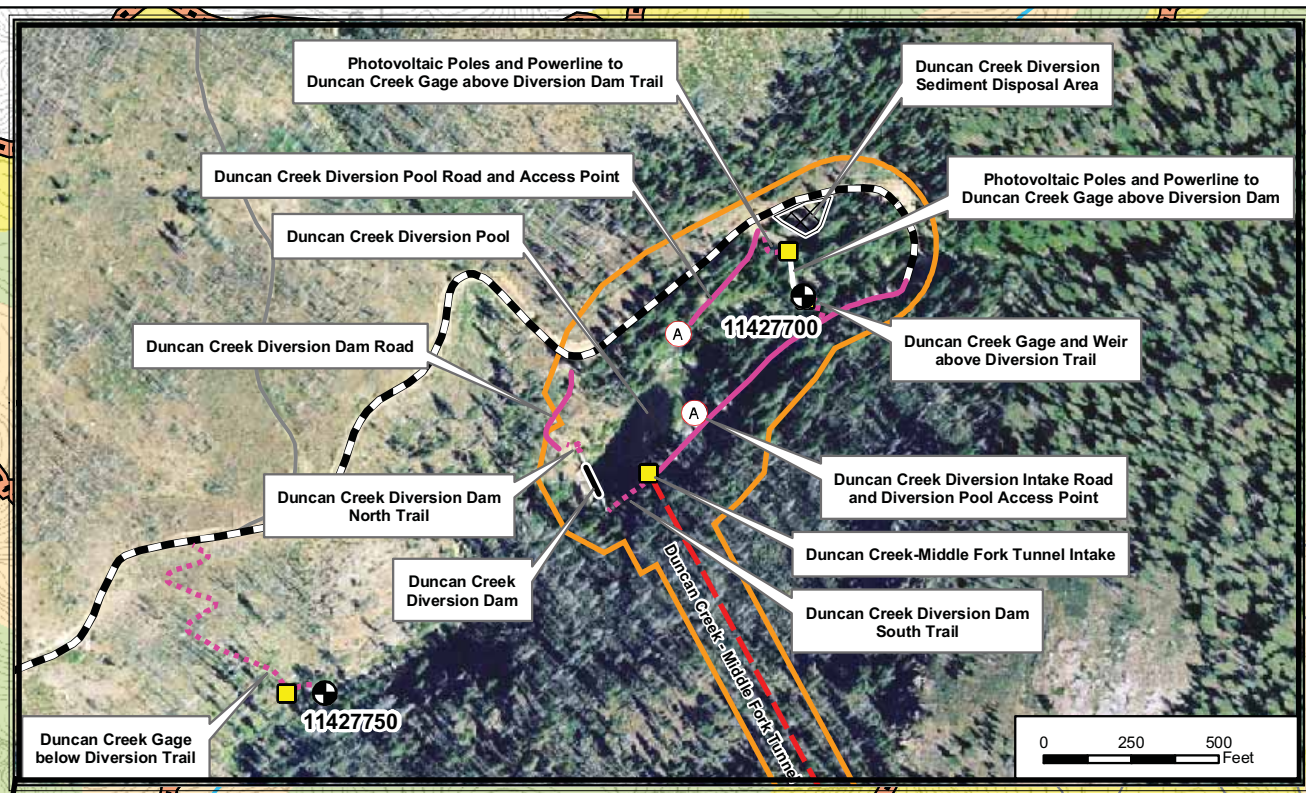
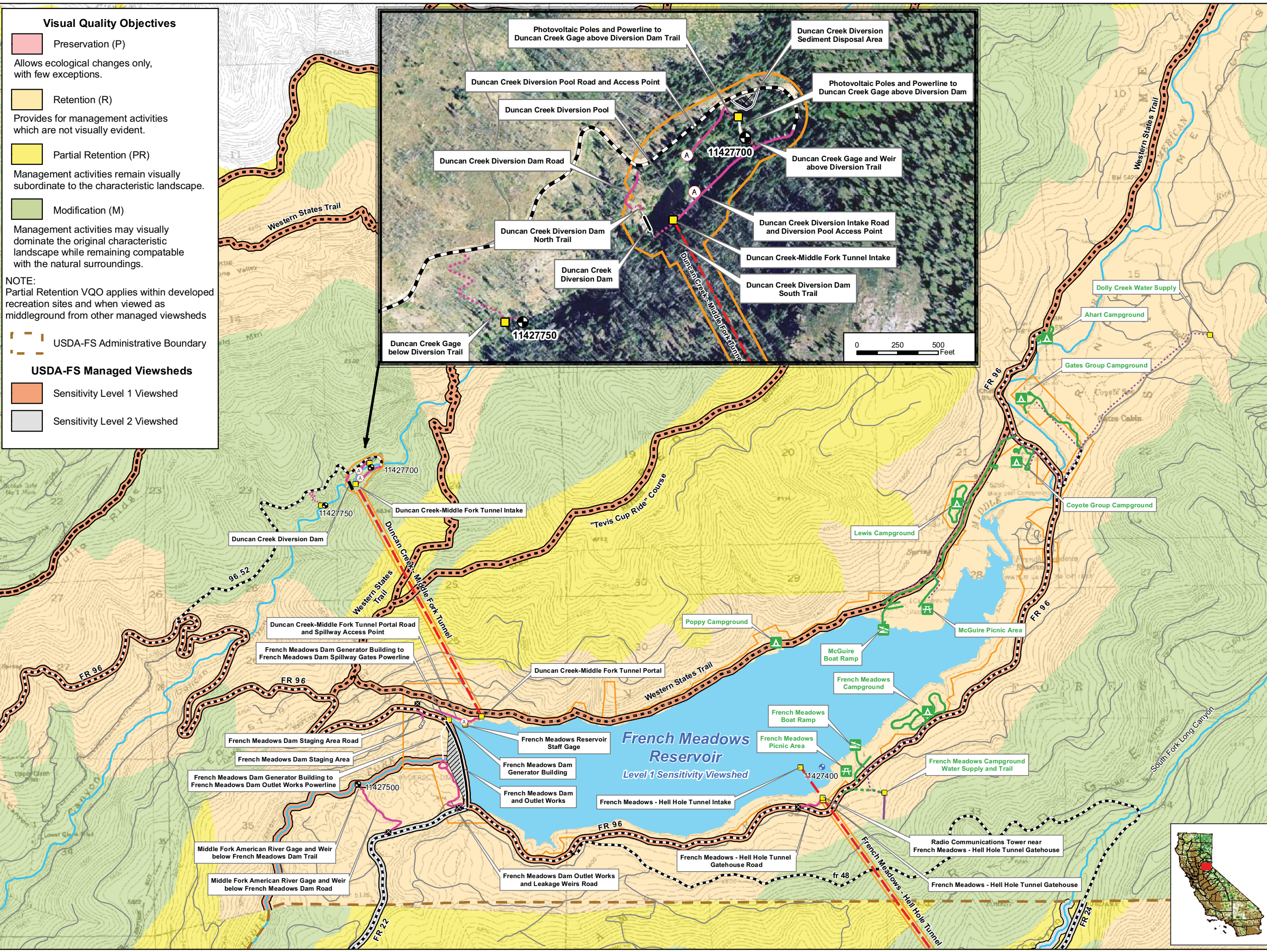
- Preservation (P)**  
Allows ecological changes only, with few exceptions.
- Retention (R)**  
Provides for management activities which are not visually evident.
- Partial Retention (PR)**  
Management activities remain visually subordinate to the characteristic landscape.
- Modification (M)**  
Management activities may visually dominate the original characteristic landscape while remaining compatible with the natural surroundings.

**NOTE:**  
Partial Retention VQO applies within developed recreation sites and when viewed as midground from other managed viewsheds

**USDA-FS Administrative Boundary**

**USDA-FS Managed Viewsheds**

- Sensitivity Level 1 Viewshed
- Sensitivity Level 2 Viewshed



### PCWA Facilities and Features

- Dam
- Ancillary and Other Facilities
- Powerhouse
- Gage
- Reservoir Gage
- Penstock
- Tunnel
- Pipeline
- Gate
- Access Point
- Public Safety Fence
- FERC Boundary

### Project Power and Communication Lines:

- Communication
- Power
- Power (underground)
- Communication/Power
- Communication/Power (underground)

### Transportation

- Non-Project General Access Road
- Project Road
- Project Trail
- Recreation Access Road
- Recreation Facility Water Supply Access Road or Trail
- Other Road

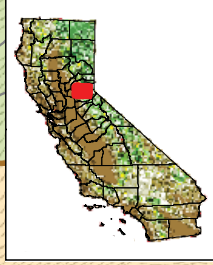
### Project Recreation Facilities

- Picnic Area
- Boat Ramp
- Scenic Viewpoint
- Developed Campground
- Water Supply Line (Above ground)
- Water Supply Line (Buried)

### Other Facilities

PG & E Transmission Lines:

- 230 kV
- 60 kV



Placer County Water Agency  
Middle Fork American River Project

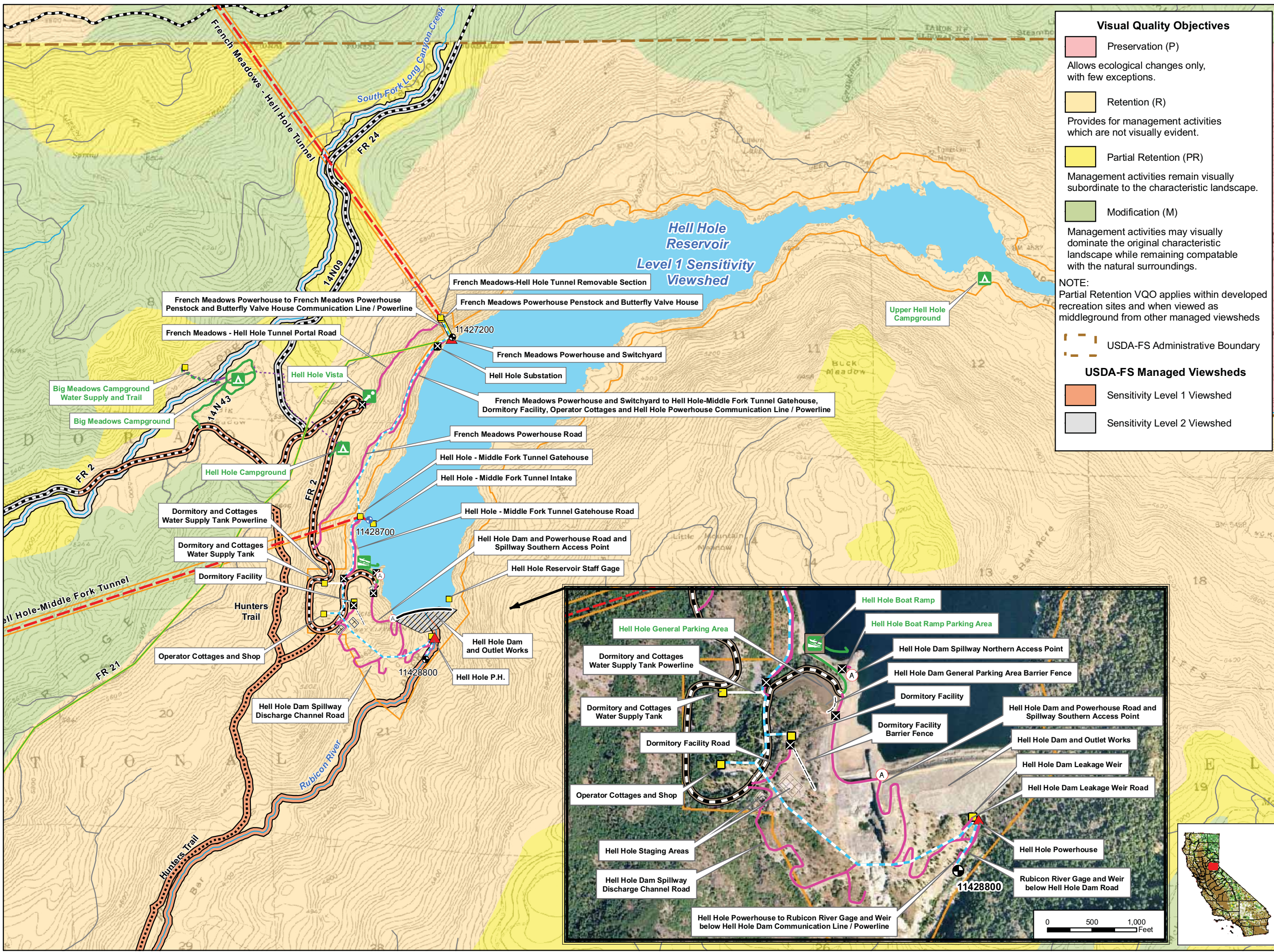
**Map REC 5-5**  
**Forest Plan Visual Quality Objectives and USDA-FS Managed Viewsheds in the Vicinity of the MFP**  
Sheet 1 of 5  
Duncan Creek, French Meadows Area

Date: 8/7/09

0 0.25 0.5 Miles

Projection: Ca. Stateplane, Zone 2  
Datum: NAD 83





### Visual Quality Objectives

- Preservation (P)** (Pink box): Allows ecological changes only, with few exceptions.
- Retention (R)** (Yellow box): Provides for management activities which are not visually evident.
- Partial Retention (PR)** (Light Yellow box): Management activities remain visually subordinate to the characteristic landscape.
- Modification (M)** (Green box): Management activities may visually dominate the original characteristic landscape while remaining compatible with the natural surroundings.

**NOTE:** Partial Retention VQO applies within developed recreation sites and when viewed as midground from other managed viewsheds

### USDA-FS Managed Viewsheds

- Sensitivity Level 1 Viewshed** (Orange box)
- Sensitivity Level 2 Viewshed** (Grey box)

### PCWA Facilities and Features

- Dam
- Ancillary and Other Facilities
- Powerhouse
- Gage
- Reservoir Gage
- Penstock
- Tunnel
- Pipeline
- Gate
- Access Point
- Public Safety Fence
- FERC Boundary

### Project Power and Communication Lines:

- Communication
- Power
- Power (underground)
- Communication/Power
- Communication/Power (underground)

### Transportation

- Non-Project General Access Road
- Project Road
- Project Trail
- Recreation Access Road
- Recreation Facility Water Supply Access Road or Trail
- Other Road

### Project Recreation Facilities

- Picnic Area
- Boat Ramp
- Scenic Viewpoint
- Developed Campground
- Water Supply Line (Above ground)
- Water Supply Line (Buried)

### Other Facilities

PG & E Transmission Lines:

- 230 kV
- 60 kV

Placer County Water Agency  
Middle Fork American River Project  
**Map REC 5-5**  
**Forest Plan Visual Quality Objectives and USDA-FS Managed Viewsheds in the Vicinity of the MFP**  
Sheet 2 of 5  
Hell Hole Area

0 0.25 0.5 Miles  
Projection: Ca. Stateplane, Zone 2  
Datum: NAD 83  
Date: 7/7/09



### Visual Quality Objectives

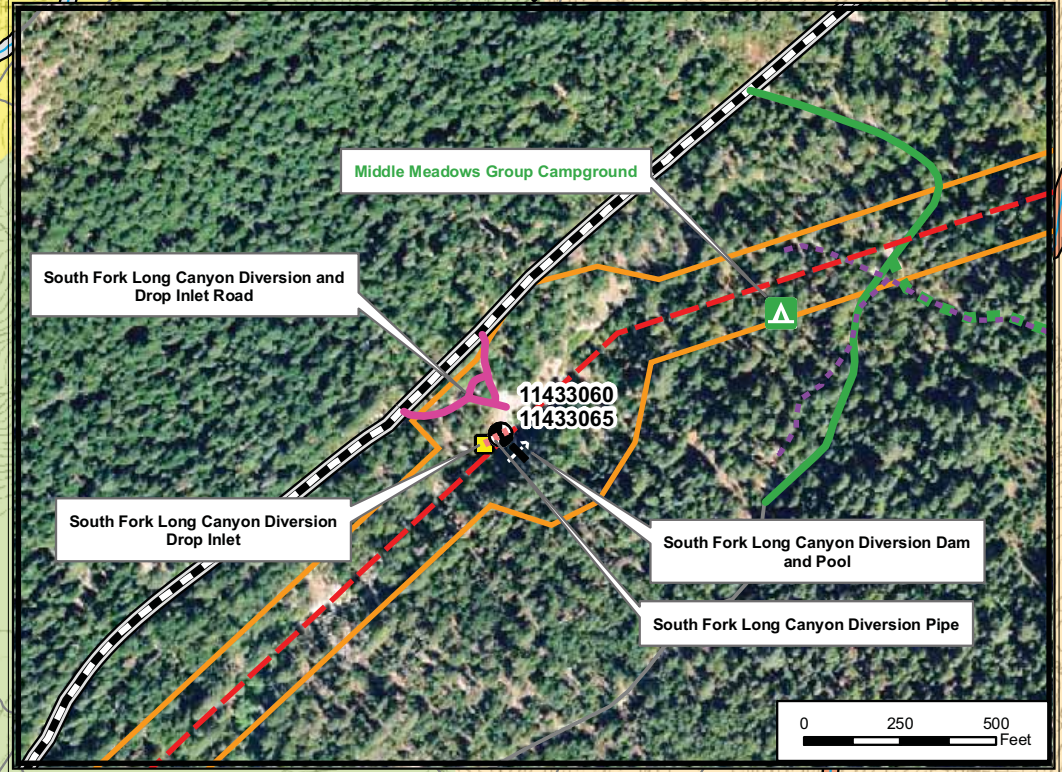
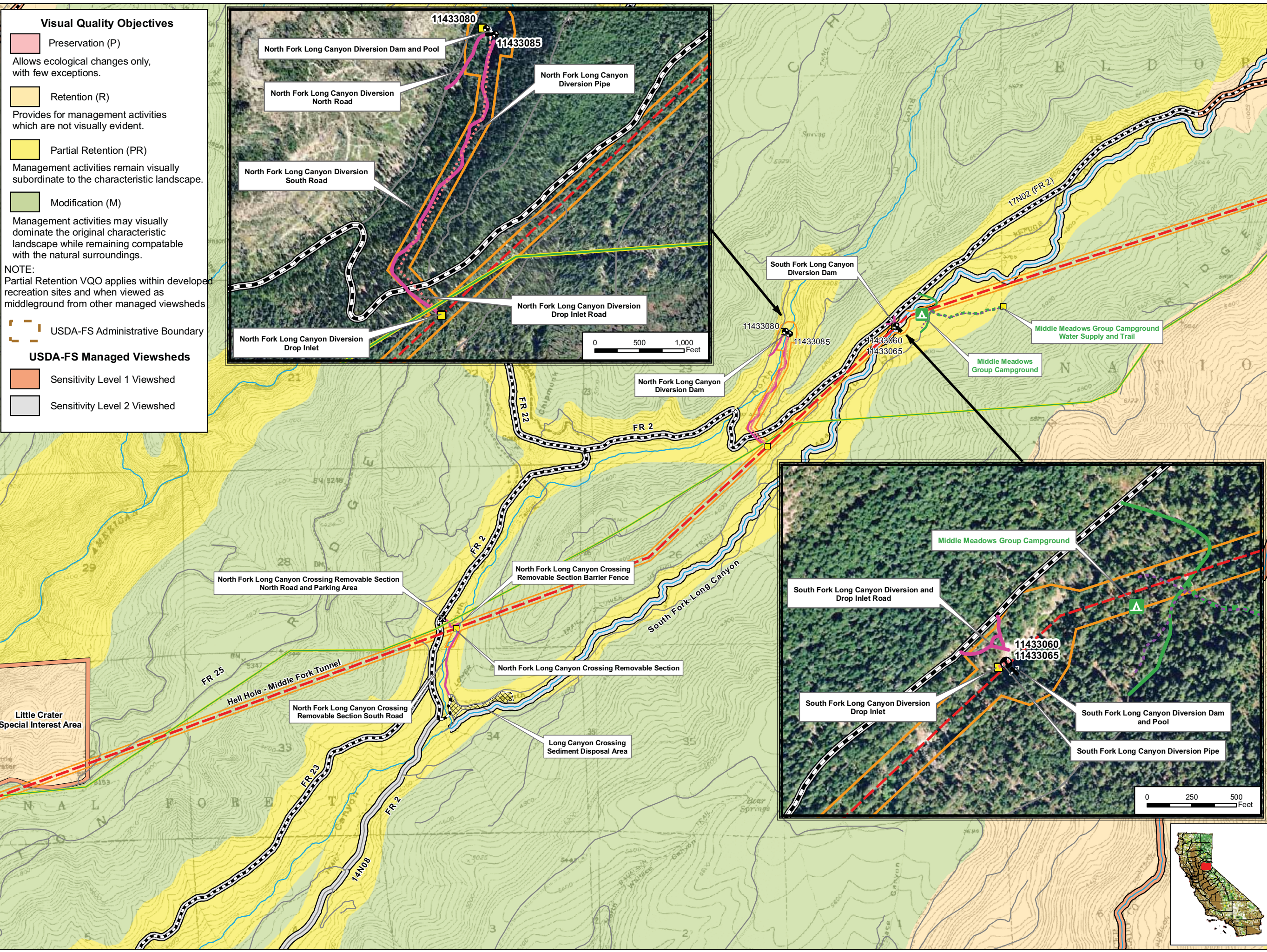
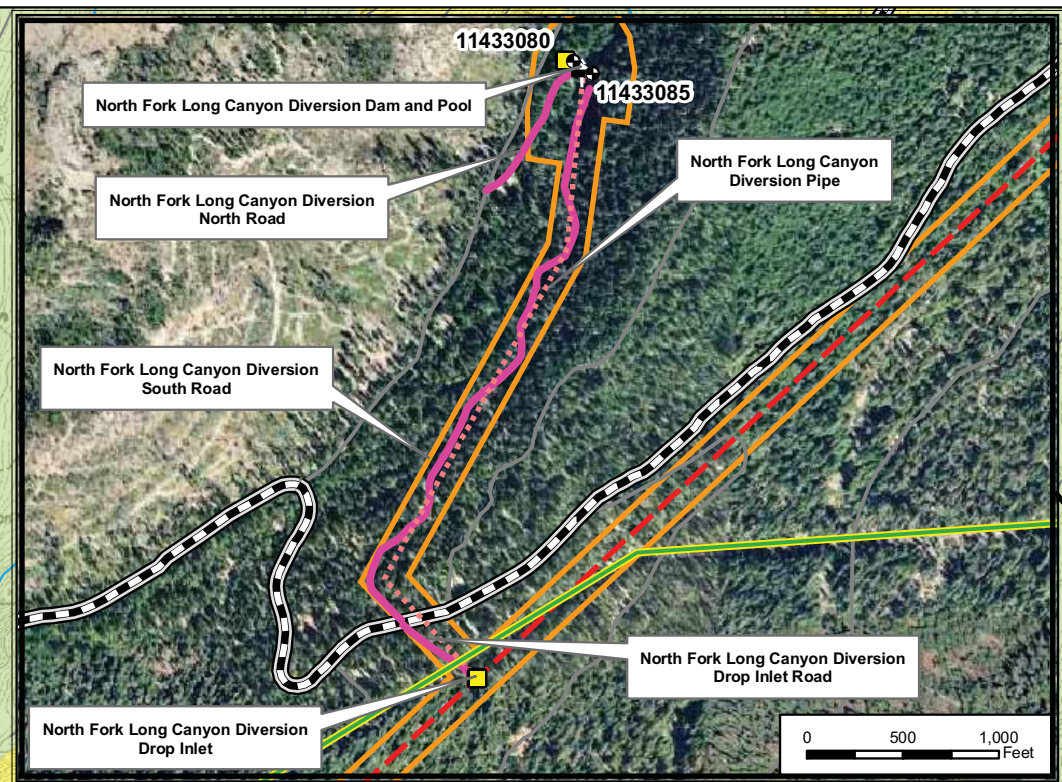
- Preservation (P)**  
Allows ecological changes only, with few exceptions.
- Retention (R)**  
Provides for management activities which are not visually evident.
- Partial Retention (PR)**  
Management activities remain visually subordinate to the characteristic landscape.
- Modification (M)**  
Management activities may visually dominate the original characteristic landscape while remaining compatible with the natural surroundings.

NOTE:  
Partial Retention VQO applies within developed recreation sites and when viewed as midground from other managed viewsheds

### USDA-FS Administrative Boundary

### USDA-FS Managed Viewsheds

- Sensitivity Level 1 Viewshed
- Sensitivity Level 2 Viewshed



### PCWA Facilities and Features

- Dam
- Ancillary and Other Facilities
- Powerhouse
- Gage
- Reservoir Gage
- Penstock
- Tunnel
- Pipeline
- Gate
- Access Point
- Public Safety Fence
- FERC Boundary

### Project Power and Communication Lines:

- Communication
- Power
- Power (underground)
- Communication/Power
- Communication/Power (underground)

### Transportation

- Non-Project General Access Road
- Project Road
- Project Trail
- Recreation Access Road
- Recreation Facility Water Supply Access Road or Trail
- Other Road

### Project Recreation Facilities

- Picnic Area
- Boat Ramp
- Scenic Viewpoint
- Developed Campground
- Water Supply Line (Above ground)
- Water Supply Line (Buried)

### Other Facilities

#### PG & E Transmission Lines:

- 230 kV
- 60 kV

Placer County Water Agency  
Middle Fork American River Project

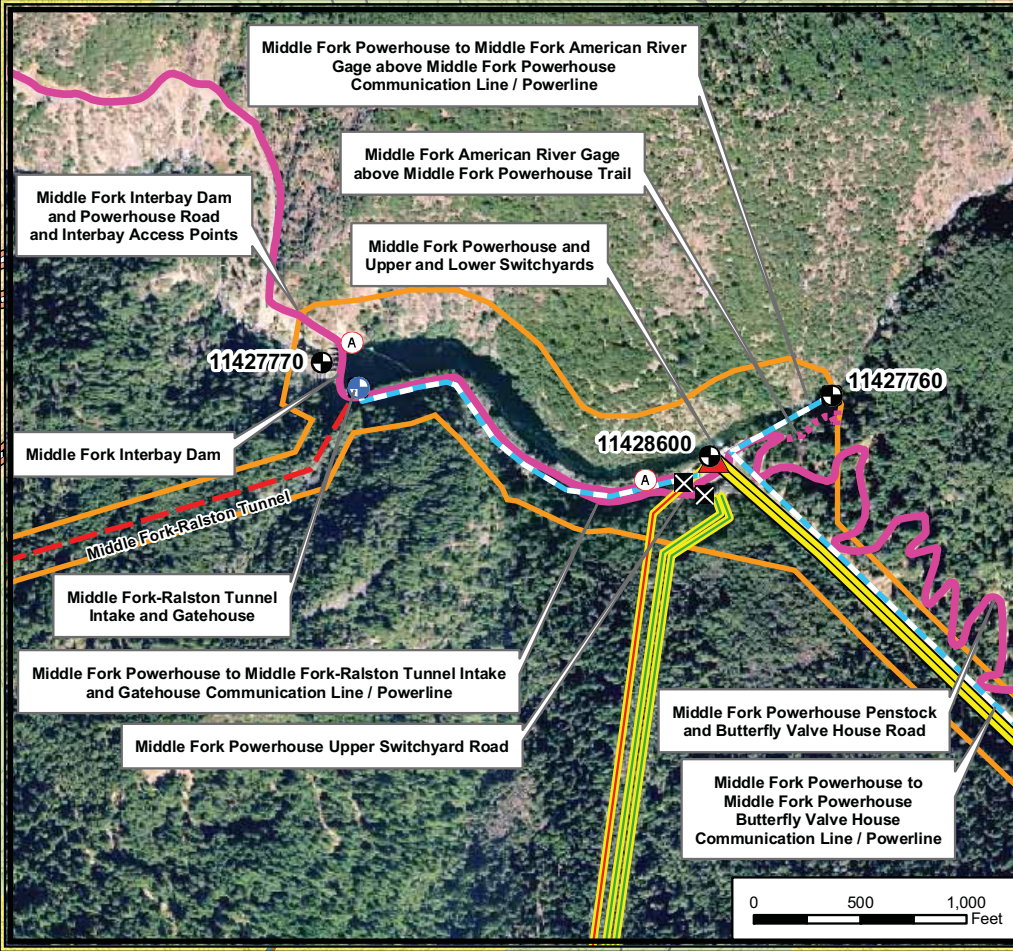
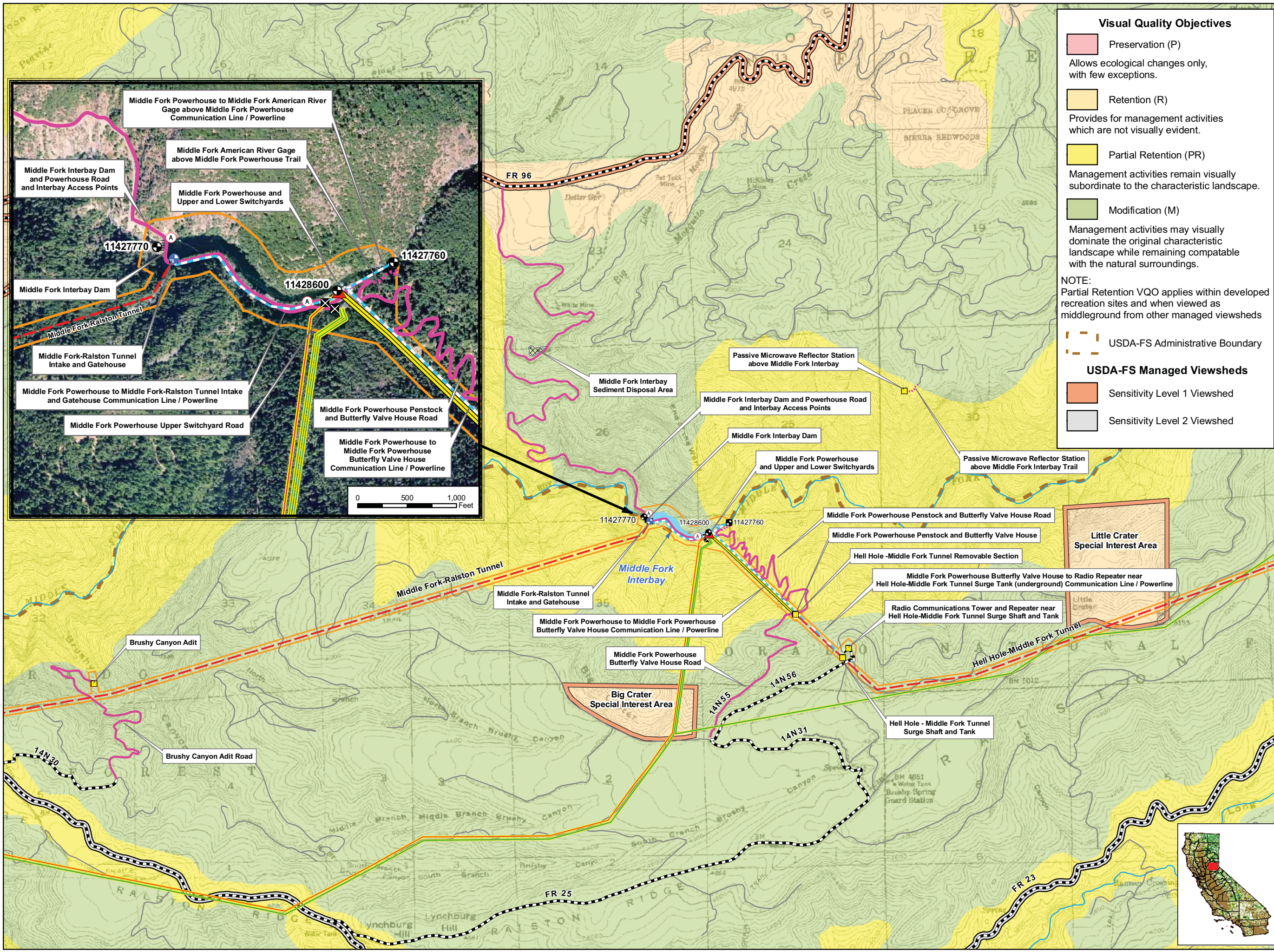
**Map REC 5-5**  
**Forest Plan Visual Quality Objectives and USDA-FS Managed Viewsheds in the Vicinity of the MFP**  
Sheet 3 of 5  
Long Canyon Area

0 0.25 0.5 Miles

Projection: Ca. Stateplane, Zone 2  
Datum: NAD 83

Date: 8/7/09





### Visual Quality Objectives

- Preservation (P)**  
Allows ecological changes only, with few exceptions.
- Retention (R)**  
Provides for management activities which are not visually evident.
- Partial Retention (PR)**  
Management activities remain visually subordinate to the characteristic landscape.
- Modification (M)**  
Management activities may visually dominate the original characteristic landscape while remaining compatible with the natural surroundings.

NOTE:  
Partial Retention VQO applies within developed recreation sites and when viewed as midground from other managed viewsheds

### USDA-FS Managed Viewsheds

- Sensitivity Level 1 Viewshed
- Sensitivity Level 2 Viewshed

### PCWA Facilities and Features

- Dam
- Ancillary and Other Facilities
- Powerhouse
- Gage
- Reservoir Gage
- Penstock
- Tunnel
- Pipeline
- Gate
- Access Point
- Public Safety Fence
- FERC Boundary

### Project Power and Communication Lines:

- Communication
- Power
- Power (underground)
- Communication/Power
- Communication/Power (underground)

### Transportation

- Non-Project General Access Road
- Project Road
- Project Trail
- Recreation Access Road
- Recreation Facility Water Supply Access Road or Trail
- Other Road

### Project Recreation Facilities

- Picnic Area
- Boat Ramp
- Scenic Viewpoint
- Developed Campground
- Water Supply Line (Above ground)
- Water Supply Line (Buried)

### Other Facilities

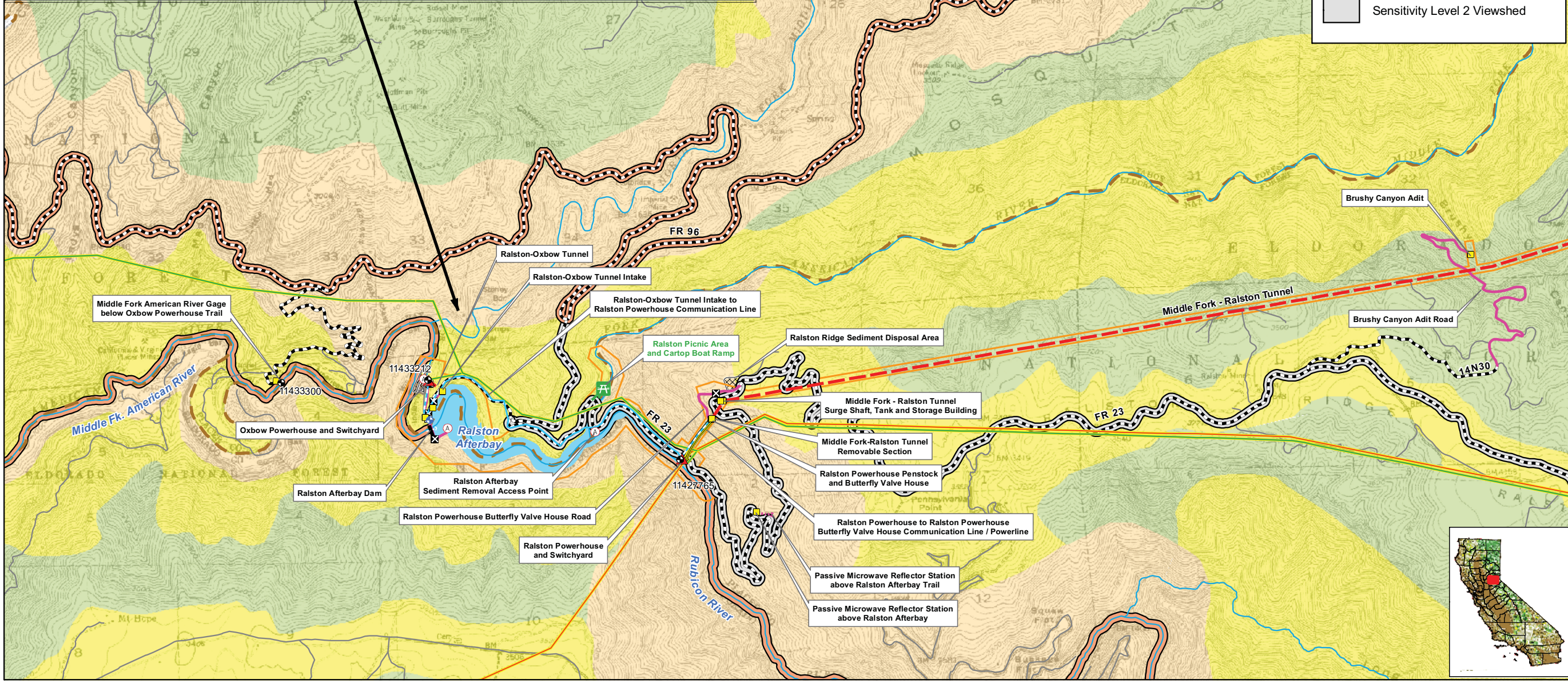
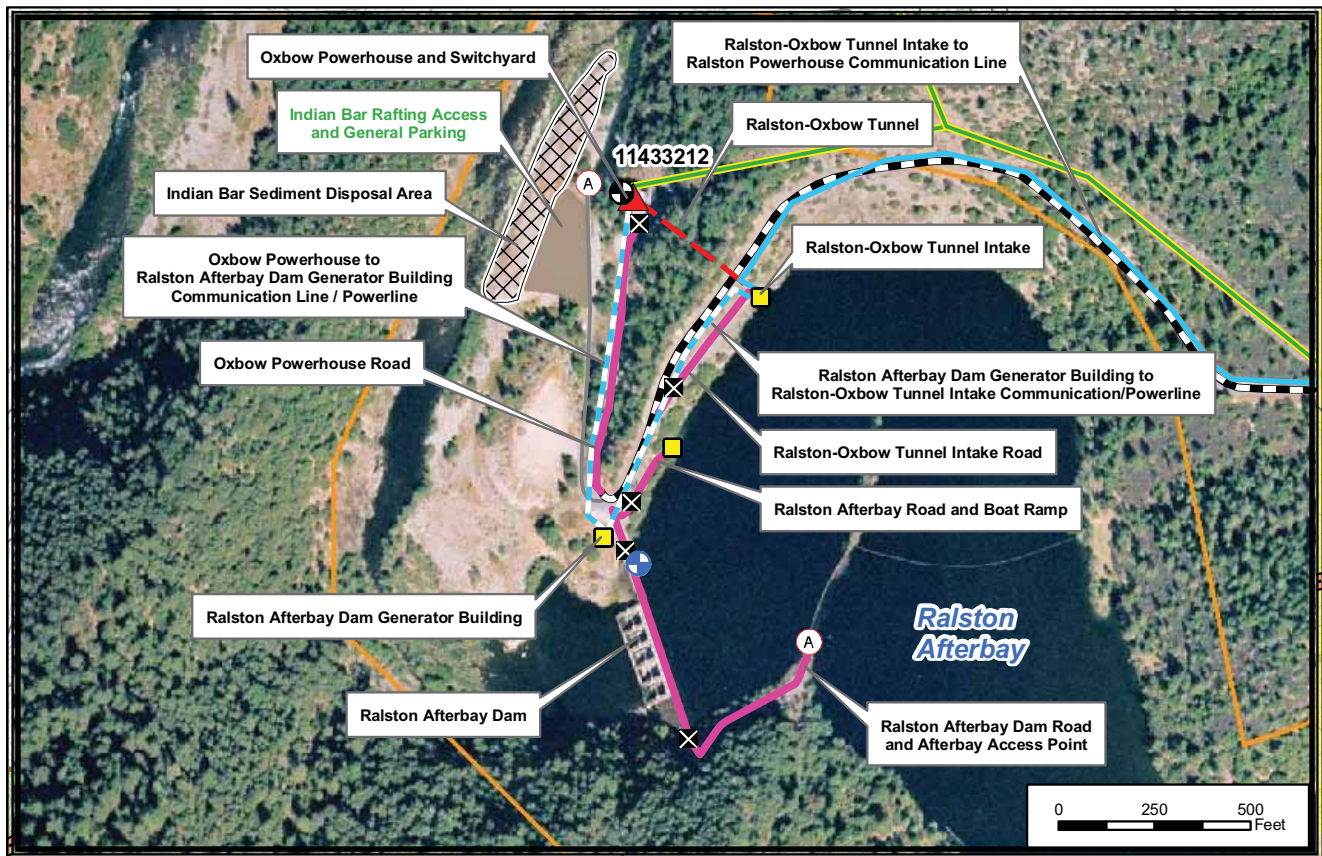
PG & E Transmission Lines:

- 230 kV
- 60 kV

Placer County Water Agency  
Middle Fork American River Project  
**Map REC 5-5**  
Forest Plan Visual Quality Objectives and USDA-FS Managed Viewsheds in the Vicinity of the MFP  
Sheet 4 of 5  
Interbay Area

0 0.25 0.5 Miles  
Projection: Ca. Stateplane, Zone 2  
Datum: NAD 83  
Date: 8/7/09





### Visual Quality Objectives

- Preservation (P)**  
Allows ecological changes only, with few exceptions.
- Retention (R)**  
Provides for management activities which are not visually evident.
- Partial Retention (PR)**  
Management activities remain visually subordinate to the characteristic landscape.
- Modification (M)**  
Management activities may visually dominate the original characteristic landscape while remaining compatible with the natural surroundings.

NOTE: Partial Retention VQO applies within developed recreation sites and when viewed as middleground from other managed viewsheds

### USDA-FS Managed Viewsheds

- Sensitivity Level 1 Viewshed
- Sensitivity Level 2 Viewshed

### PCWA Facilities and Features

- Dam
- Ancillary and Other Facilities
- Powerhouse
- Gage
- Reservoir Gage
- Penstock
- Tunnel
- Pipeline
- Gate
- Access Point
- Public Safety Fence
- FERC Boundary

### Project Power and Communication Lines:

- Communication
- Power
- Power (underground)
- Communication/Power
- Communication/Power (underground)

### Transportation

- Non-Project General Access Road
- Project Road
- Project Trail
- Recreation Access Road
- Recreation Facility Water Supply Access Road or Trail
- Other Road


### Project Recreation Facilities

- Picnic Area
- Boat Ramp
- Scenic Viewpoint
- Developed Campground
- Water Supply Line (Above ground)
- Water Supply Line (Buried)

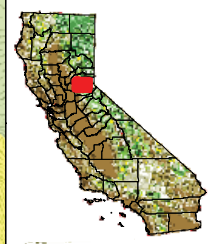
### Other Facilities

PG & E Transmission Lines:

- 230 kV
- 60 kV



Placer County Water Agency  
Middle Fork American River Project  
**Map REC 5-5**  
**Forest Plan Visual Quality Objectives and USDA-FS Managed Viewsheds in the Vicinity of the MFP**  
Sheet 5 of 5  
Ralston Afterbay Area



Date: 8/7/09  
Projection: Ca. Stateplane, Zone 2  
Datum: NAD 83



**Visual Quality Objectives**

- Preservation (P)**  
Allows ecological changes only, with few exceptions.
- Retention (R)**  
Provides for management activities which are not visually evident.
- Partial Retention (PR)**  
Management activities remain visually subordinate to the characteristic landscape.
- Modification (M)**  
Management activities may visually dominate the original characteristic landscape while remaining compatible with the natural surroundings.

**NOTE:**  
Partial Retention VQO applies within developed recreation sites and when viewed as midground from other managed viewsheds

**USDA-FS Managed Viewsheds**

- Sensitivity Level 1 Viewshed
- Sensitivity Level 2 Viewshed

**PCWA Facilities and Features**

- Dam
- Ancillary and Other Facilities
- Powerhouse
- Gage
- Penstock
- Tunnel
- Gate
- Access Point
- FERC Boundary

**Transportation**

- Road
- Project Road
- Project Trail
- Recreation Access Road

**Project Recreation Facilities**

- Picnic Area
- Boat Ramp
- Scenic Viewpoint
- Developed Campground

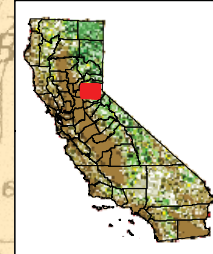
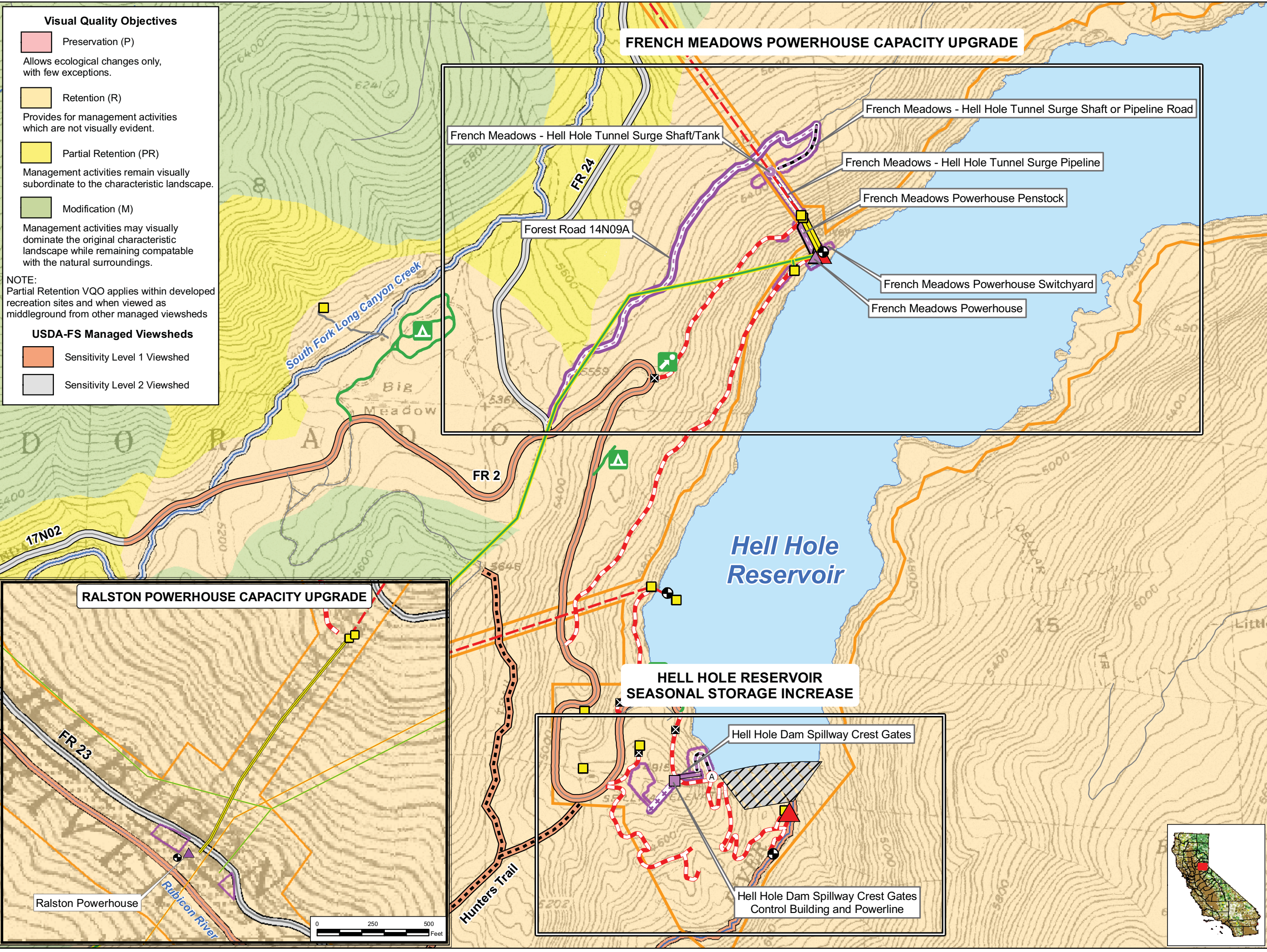
**Other Facilities**

PG & E Transmission Lines:

- 230 kV
- 60 kV

**Potential Project Betterments**

- Access Road
- Non-Project Road
- Construction Staging and/or Work Area
- Control Building
- Penstock
- Outlet Pipe
- Surge Pipeline
- Powerline
- Powerhouse
- Surge Shaft
- Crest Gates



**PCWA**  
Placer County Water Agency  
Middle Fork American River Project

**Map REC 5-6**  
Forest Plan Visual Quality Objectives and USDA-FS Managed Viewsheds at Proposed Project Betterments

0 250 500 1,000 Feet  
 Projection: Ca. Stateplane, Zone 2  
 Datum: NAD 83  
 Date: 8/7/09